

Large Sample Size Data 2 Maps (D2M) Assistance

To be used in addition to the general D2M guide for projects with greater than 21 sampling locations

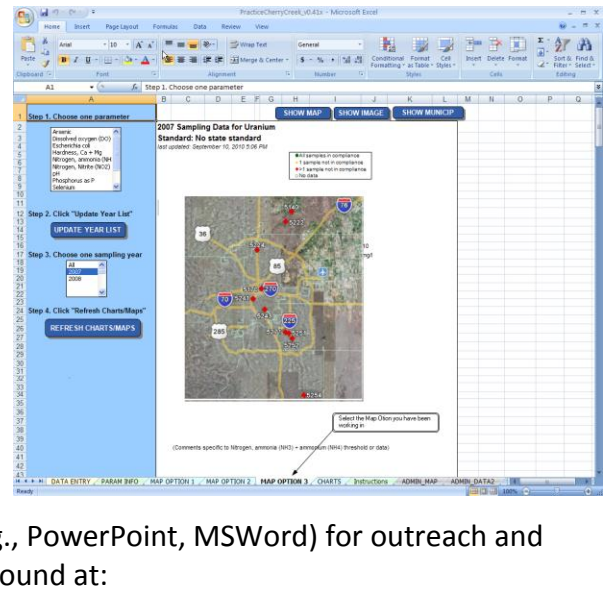
This Large Sample Size D2M Guide is to be used in addition to the D2M 2007 User Manual, “D2M_2007template_v1.xls,” and is **needed only for D2M projects with over 21 sampling locations.**

Data 2Maps:

Locally-led watershed projects need to be able to demonstrate what the water quality data of their local area is in order to attract support. Being able to show people where the problems are in the watershed is an important tool for building public support.

To address this need, D2M was developed as a custom Excel application in which users can overlay their sampling data on static maps and do preliminary assessment and analyses. By using Excel for this template it allows local organizations without many IT resources to assess their data and present it in a visually engaging manner. The outputs can be printed directly from D2M or pasted into other applications (e.g., PowerPoint, MSWord) for outreach and reporting materials. Downloads for Data2Maps can be found at:

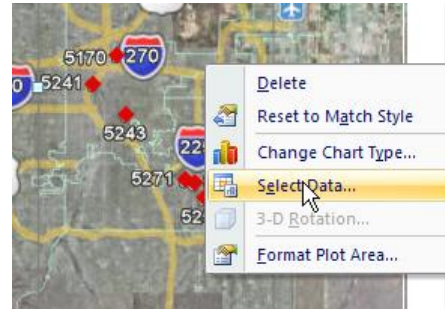
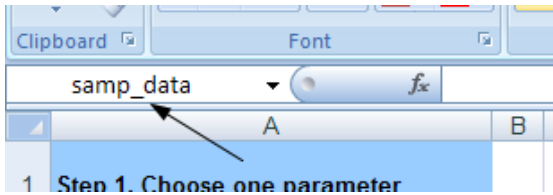
<https://wiki.epa.gov/watershed2/index.php/Data2Maps>



Although D2M is best suited for projects with pre-determined and limited (less than 15) sampling locations, there has been interest in using D2M to map projects with greater sampling sizes. In projects with a large sampling size it is recommended that Map Option Worksheet 3. This option provides a simple layout that does not include charts like Map Option Worksheets 1 and 2 but charts can still be printed separately using the Charts Worksheet.

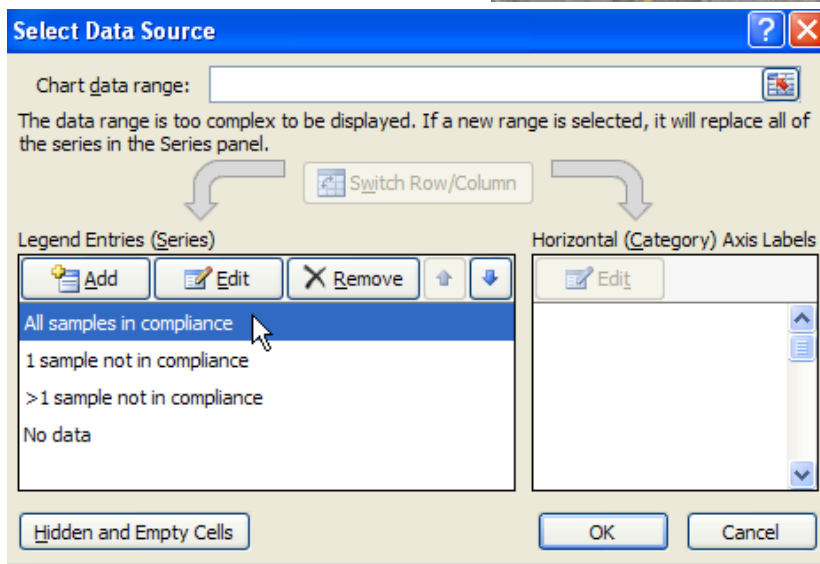
Although this step can be done it is recommended that this step be done directly after “Entering Fake Data” on page 47 of the D2M 2007 User Manual before the next step of “Looking at Your Sampling Locations” on page 49 or the user will notice that sampling locations missing on the map option they are working with. If the user is noticing sample locations missing on their Map because they have over 21 sampling locations later in the setup process this step can be completed at any time.


1. In D2M, click on the Excel tab for the Map Option you are working in.
2. Left Click on the map, and click "Select Data". Note that "samp_data" should appear in the name box towards the upper left corner of the Excel Screen. If this is not shown, please refer to pg 50 of the 2007 User Manual.

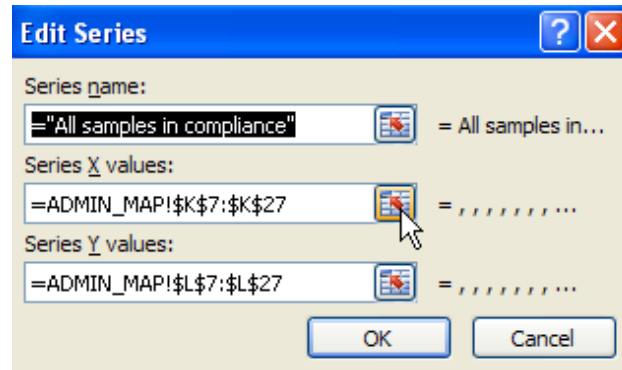


3. Click on "All Samples in Compliance" and Hit

"Edit."



4. Click on the  button next to Series X values. This will allow you to select the queried X data points the map will be using to chart sites that are in compliance with the Standards/Thresholds you set.



- This should bring you to the ADMIN_MAP tab that the queried data is being pulled from. Highlighted are rows that the graph will pull data from. In the D2M2007template it is currently set to query samples, or 21 rows of data. Reselect the selected column's rows to match the number of sites you are mapping, starting from K7 (for example if you have 31 sample sites you will need to pull the column from K7 to K37).

mapdata		(LONGITUDE)	(LATITUDE)		No exceedances
Crit Num	Site ID	X	Y	# EXCEED	mapcrit1
1	5140	-104.821	40.0808333	4	# EXCEED
2	5170	-104.967083	39.79225	5	=0
3	5222	-104.8492	40.0438	4	
4	5224	-104.88200	39.8274	5	
5	5241				
6	5243				
7	5251				
8	5252	-104.81805	39.60509	3	
9	5254	-104.76136	39.39231	5	
10	5271	-104.8508	39.62888	3	


Edit Series [?] [X]

=ADMIN_MAP!\$K\$7:\$K\$37

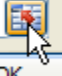
This number shows you show many rows/ columns you have selected. In this case 31 rows are selected because this project has 31 sampling sites.

31R x 1C

- Click the  button when finished.

- Click on the  button next to Series Y values. This will allow you to select the queried Y data points the map will be using to chart sites that are in compliance with the Standards/Thresholds you set.

Series Y values:

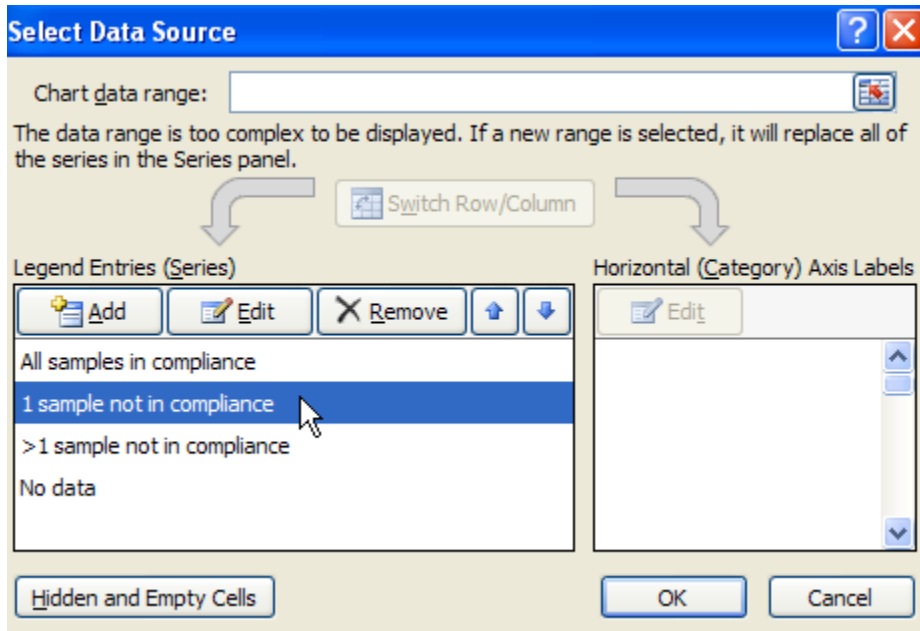
=ADMIN_MAP!\$L\$7:\$L\$27  =

- Reselect the data column to match the number of sites you have starting from L7 (for example if you have 31 sample sites you will need to pull the column down from L7 to L37).
- Click "OK"

10. Chart the rest of the Legend Series using instructions 3-7.

This will include:

- “1 sample not in compliance” going from O,7 to O,37 for the X data and from P,7 to P,37 for the Y data in a case with 31 sampling locations
- “>1 Sample in compliance” going from S,7 to S,37 for the X data and from T,7 to T,37 for the Y data in a case with 31 sampling locations
- “No Data” going from W,7 to W,37 for the X data and from X,7 to X,37 for the Y data in a case with 31 sampling locations



11. Press OK when finished in the “Select Data Source” window (above), which should bring you back to your Map Option window. You are now finished with Large Sample Size D2M Assistance and will be able to see over 21 sites on the Map Option you are working with. If you have chosen to work with more than 1 Map Option, you will need to repeat these steps with each Map Option you are using.

You can now complete the rest of D2M set up if required. If the number of your sampling locations increases past the number you have set here in the future, make sure to repeat these assistance steps to include the correct number of sites from queried samp_data on your map.